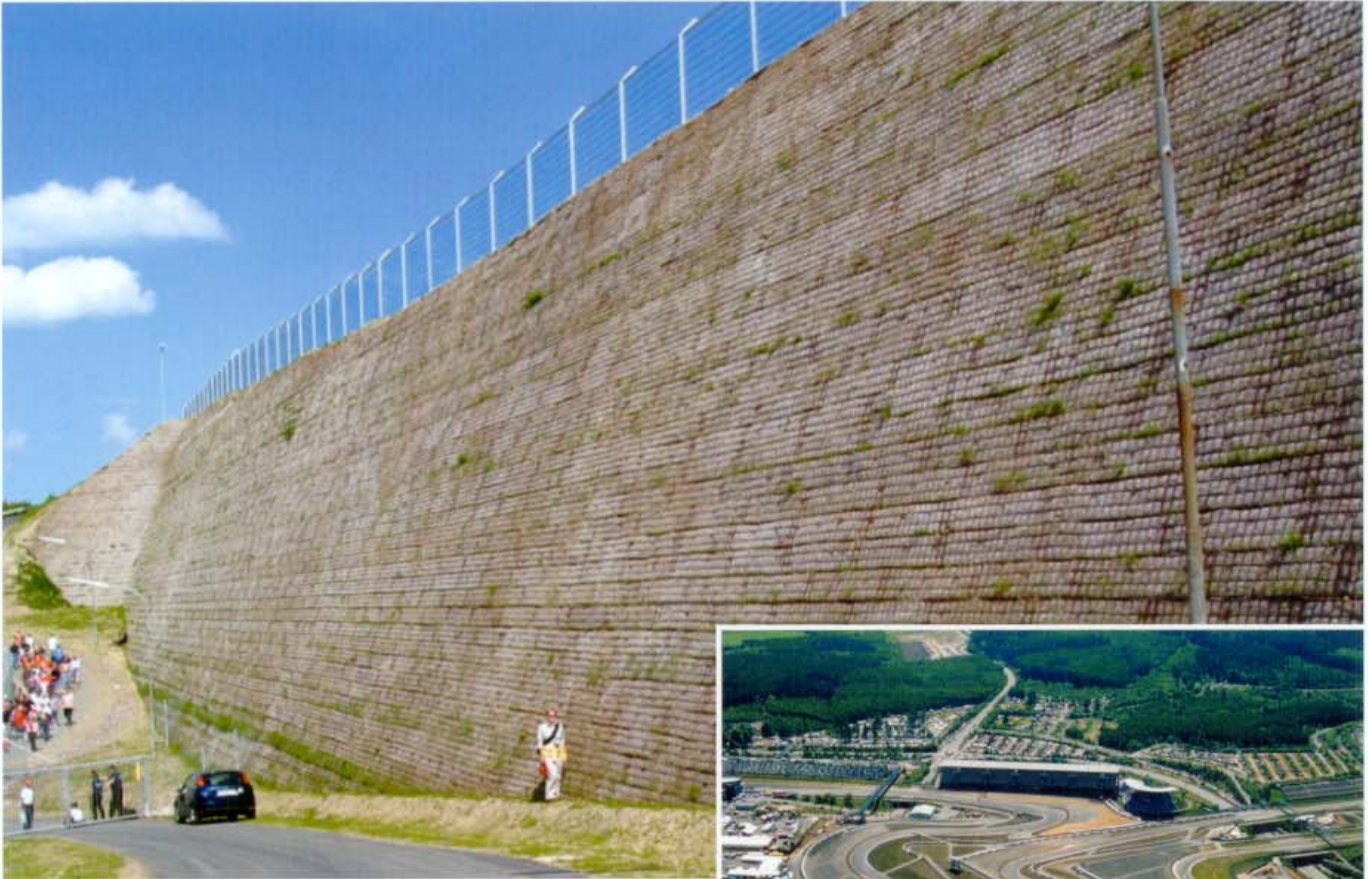


**Fortrac® geogrids make it possible:
21 m high mechanically stabilised earth
wall at the Nürburgring**



Location: Nürburgring Formula 1 racing track, Germany
Client: Nürburgring GmbH
Installation drawings: IBH – Ingenieurbüro Herold, Weimar
Contractor: Schnorpfeil, Treis-Karden, Germany
Year of construction: 2001/2002
Products: **Fortrac®** R110/25-20/30MP
Fortrac® 80/25-20/30MP
Fortrac® 35/20-20/30MP

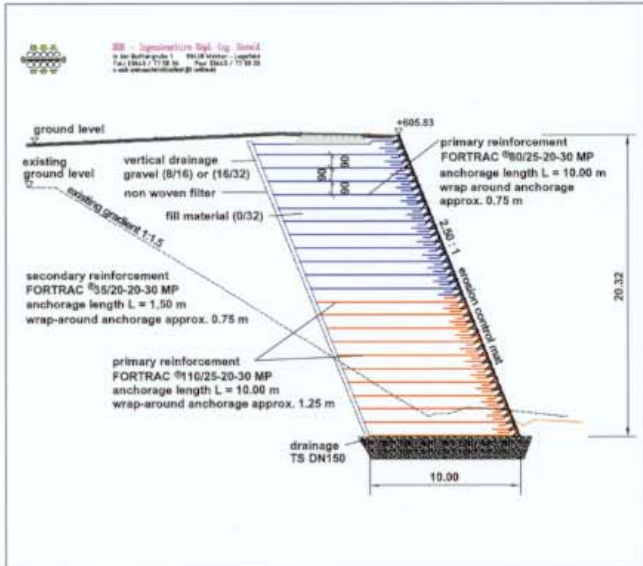
Approximately 50.000 m² of **Fortrac®** were used to construct a wall as part of the extension of the Formula 1 race circuit. The wall was integrated in the new Mercedes Benz Arena, and will be having a green finish.

The solution

The solution chosen by the client was a mechani-

cally stabilised earth wall (MSEW) reinforced with different **Fortrac®** geogrid types, and with a maximum height of 21m, a length of approximately 190m and an inclination of 70°. The construction stage was strictly limited to the winter time only (off-season). The wall was finished with a green facing, by using an erosion control mat and hydro-seeding. Since recycled slag material was used as fill material, the high pH level (up to 12) required the use of a chemically resistant reinforcement. Furthermore the use of low creep material was necessary, in order to avoid excess deformation in this aesthetically high profile project. **Fortrac®** M, consisting of PVA yarns with high chemical resistance and very low creep tendency, combined with excellent stress strain behaviour was selected and is performing excellently – during construction and in its final appearance.

**Fortrac® geogrids make it possible:
21 m high mechanically stabilised earth
wall at the Nürburgring**



The advantages

- Construction also possible in winter time during frost periods.
- Very flexible solution, in construction, engineering and landscaping.
- Ease of construction.
- Minimal settlements, not susceptible to potential differential settlements.
- Excellent integration in the environment.
- **Fortrac®** allows the use of local fill or recycled construction waste.
- Can be integrated harmoniously within other existing structures and elements.
- Very economical solution.



HUESKER Synthetic GmbH

Fabrikstraße 13-15 • D-48712 Gescher
Telefon: 0 25 42 701-0 • Fax: 0 25 42 701-499
Internet: www.huesker.com • E-mail: info@huesker.de

